

# CERTIFICATE OF LOCATION OF GOVERNMENT CORNER

NORTH QUARTER Corner of Section 08, Township 107N, Range 43W

5th Principal Meridian, State of Minnesota, County of Murray

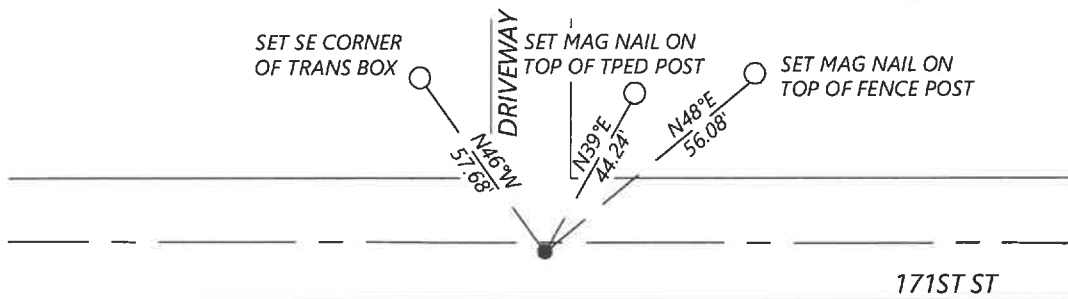
At the corner location shown on the sketch:

☒ On 11/29/2022 found a 10" round stone 0.4' deep.  
DATE

☒ left monument as found ☐ lowered monument ☐ removed monument (explain)

☒ On \_\_\_\_\_ placed a 3 new ties.  
DATE

## SKETCH OF REFERENCE TIES



N.T.S.

Statement of evidence for this corner location is on back of this page.

I hereby certify that this document was researched and prepared by me or under my direct supervision and that I am a licensed Land Surveyor under the laws of the State of Minnesota.

Signature Kyle Brown

Date 12/29/2022 License No. 56488

Title:

☒ Land Surveyor ☐ Professional Engineer  
☐ County Surveyor ☐ County Engineer

## OFFICE OF THE COUNTY RECORDER

County of Murray

I hereby certify that this

document was filed in the Co.

Recorder's office at \_\_\_\_\_ M. on the

\_\_\_\_\_ day of \_\_\_\_\_ A.D. 20

County Recorder Karen Brown

by \_\_\_\_\_, Deputy

DOCUMENT NO. \_\_\_\_\_

JAN 05 2023

KYLE JOHNSON  
Minnesota License No. 56488

**Statement of Evidence:**

North Quarter Corner of Section 08, Township 107 North, Range 43 West, 5th Principal Meridian, Murray County, Minnesota.

*1866- GLO set a post in mound of earth.*

*2007- Chris Moehrl, LS40853, filed a corner record stating he found a stone 0.4' deep and notes 3 ties.*

*2022- Westwood Professional Services found a 10" round stone 0.4' deep that agrees with previous unrecorded Westwood survey and set 3 ties.*

Analysis of the recovered data, field evidence and survey measurements, indicates that the monument found is the correct perpetuation of this corner. For additional information concerning this corner please contact Westwood Professional Services.